

Parking for units 7&8 to be within golf club car park

Existing Golf Clubhouse parking

Existing Golf Clubhouse

Parking Court and turning area to have permeable surface

60m vision splay line from 2400mm entrance set back

25m vision splay line from 2400mm entrance set back

New house access points to have 2x2m pedestrian vision splays at road edge

All double garages to have min. internal dimensions of 6000x6000mm

Existing vehicle access to site retained and re-used. Road width and entrance widened to min 4800mm

Highways edge to be kept clear of obstructions - currently grass only

60m vision splay line from 2400mm entrance set back

Schedule:
Units 1,2&6: 4 Bed detached + garage
Units 3-5: 3 bed detached
Units 7&8: 2 bed semi-detached

Rev	Date	Revision	Notes revised
Partner	Drawn	Date	
BWD	BWD	FEB 2017	

Scale: 1:500 @ A3

Project: Huntercombe Golf Course Houses

Title: Proposed Site Plan Option 4 Vision Splays

Drawing No: 15146-OA-B1-021-P-00

Status	Revision
PLANNING	A



OXFORDARCHITECTS
Bagley Croft, Hinksey Hill, Oxford, OX1 5BS
T 01865 329100 F 01865 326822 W oxford-architects.com



Schedule:
 Red = RPA of trees to be removed
 Green = RPA of trees to be retained
 Blue = New or amended planting

Rev	Date	Revision
F	03.04.17	Drawing revised
E	22.03.17	Plan layout updated
D	02.11.16	Plan updated
C	31.10.16	Plan updated
B	12.04.16	Planning Issue
A	09/03/16	Boundary lines added

Partner	Drawn	Date
BWD	BWD	FEB 2016

Scale
1:500 @ A3

Project
Huntercombe Golf Course Houses

Title
Proposed Site Plan Tree Constraints

Drawing No
15146-OA-B1-016-P-00

Status	Revision
PRELIMINARY	F



OXFORDARCHITECTS
 Bagley Croft, Hinksey Hill, Oxford, OX1 5BS
 T 01865 329100 F 01865 326822 W oxford-architects.com



Stratton Park House, Wanborough Road
Swindon, SN3 4HG

Telephone
01793 828000

Facsimile
01793 835500

Email
admin@pfapl.com

Website
www.pfapl.com

Preliminary
These drawings are produced for initial discussion and illustrative purposes only, and should not be relied upon for tender or pricing purposes.

NOTES

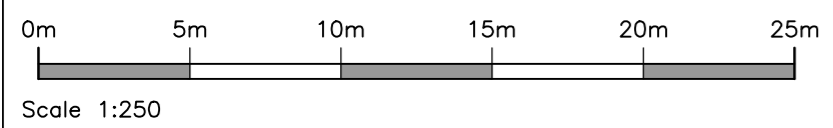
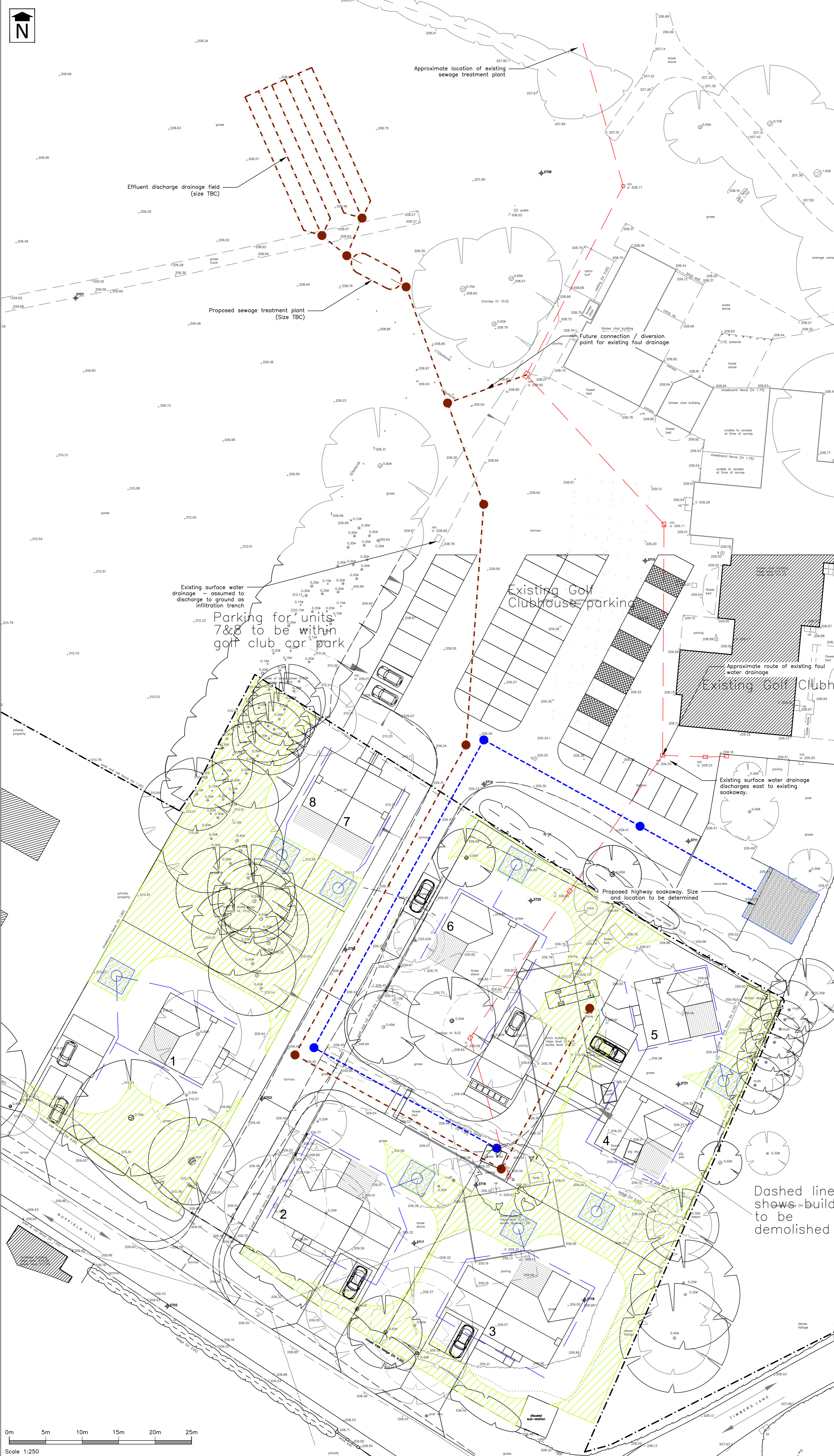
1. Drawing for information only
2. Soakaway size is subject to infiltration test results and hydraulic modeling
3. Do not scale from this drawing

GENERAL KEY

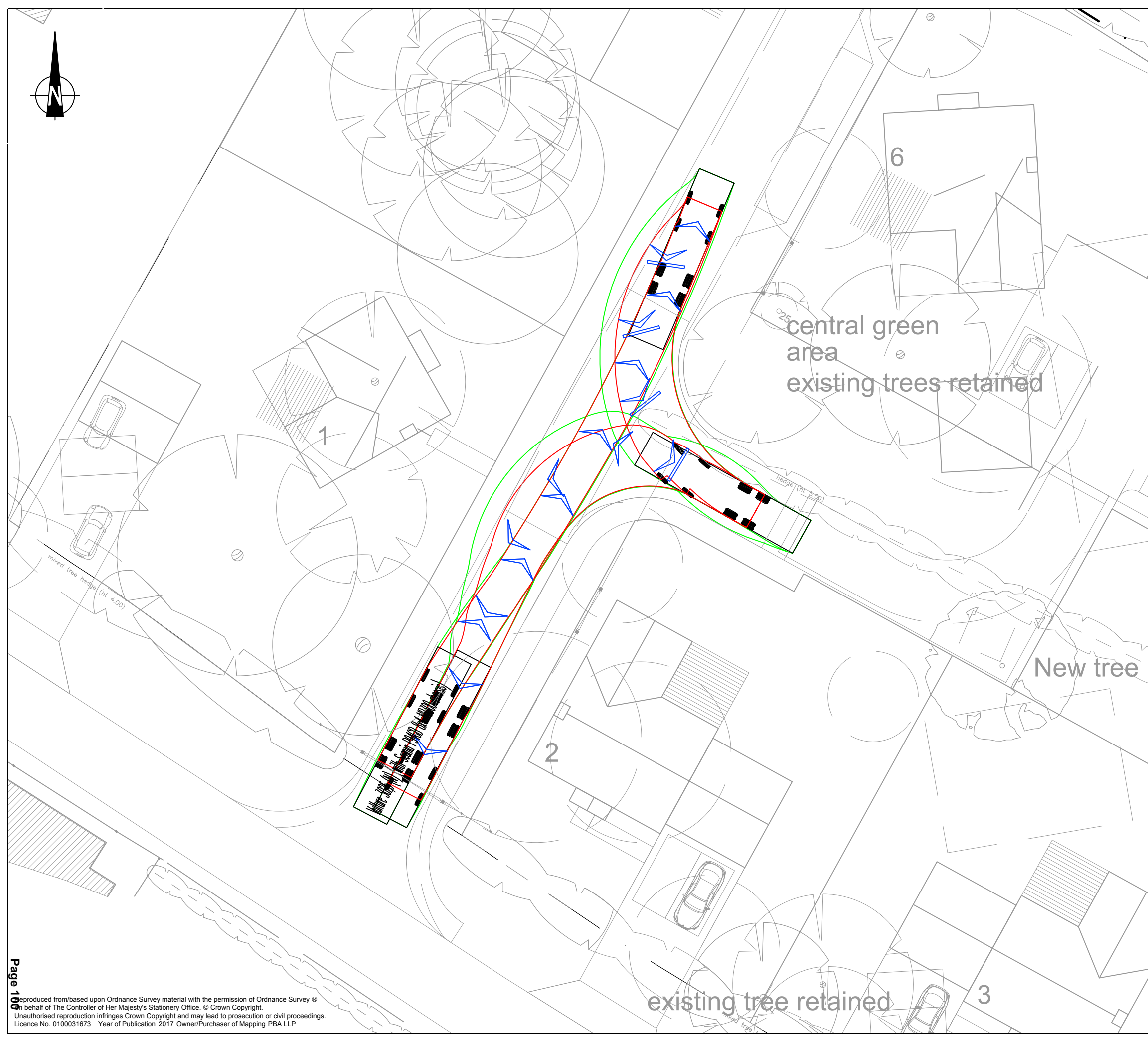
- Development Site Boundary
- Huntercombe Golf Club Site Boundary
- Existing Tree Removed
- Existing Tree Retained

DRAINAGE KEY

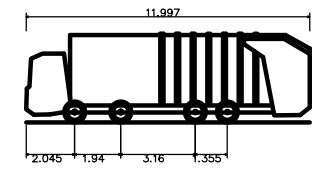
- Existing Foul Sewer
- Existing Surface Water Sewer
- Foul Water Sewer
- Surface Water Sewer
- Cellular Soakaway
- Concrete Ring Soakaway
- Permitted soakaway zone



A	03/04/17	Drainage Strategy amended for revised masterplan	MTD	CI
Rev	Date	Description	Initials	Check
Status			PRELIMINARY	
Client			Huntercombe Golf Club	
Project			Proposed Development at Huntercombe Golf Club	
Drawing Title			Drainage Strategy	
Drawing No.			K122/01 Rev A	
Date	September 2016			
Scale	1:250@A1			
Drawn By	MTD	Checked By	CI	
E-Mail	mdyer@pfapl.com			
File Ref.	F:\Workfile\K122\AutoCAD\Drawings			



VEHICLE PROFILE



Vulture 3025 (N) (with Scania P94GB 8x4 NB300 chassis)
 Overall Length 11.997m
 Overall Width 2.500m
 Overall Body Height 3.749m
 Min Body Ground Clearance 0.302m
 Track Width 2.490m
 Lock-to-lock time 4.00s
 Curb to Curb Turning Radius 10.800m

BASED ON: OXFORD ARCHITECTS
 HUNTERCOMBE GOLF CLUB - SITE PLAN

Mark	Revision	Date	Drawn	Chkd	Appd

SCALING NOTE: Do not scale from this drawing. If in doubt, ask.
 UTILITIES NOTE: The position of any existing public or private sewers, utility services, plant or apparatus shown on this drawing is believed to be correct, but no warranty to this is expressed or implied. Other such plant or apparatus may also be present but not shown. The Contractor is therefore advised to undertake their own investigation where the presence of any existing sewers, services, plant or apparatus may affect their operations.

Drawing Issue Status
FOR INFORMATION

HUNTERCOMBE GOLF CLUB
 SWEEP PATH ANALYSIS
 LARGE REFUSE VEHICLE
 3 POINT TURN

Client
**MICHAEL WHEAT
 HIGHWAY PLANNING**

Date of 1st Issue	Designed	Drawn
21.03.17	-	AL
A3 Scale	Checked	Approved
1:250	SC	-

Drawing Number
40882/5501/001



Offices throughout the UK and Europe
www.peterbrett.com
 © Peter Brett Associates LLP
 READING
 Tel: 01189 500 761